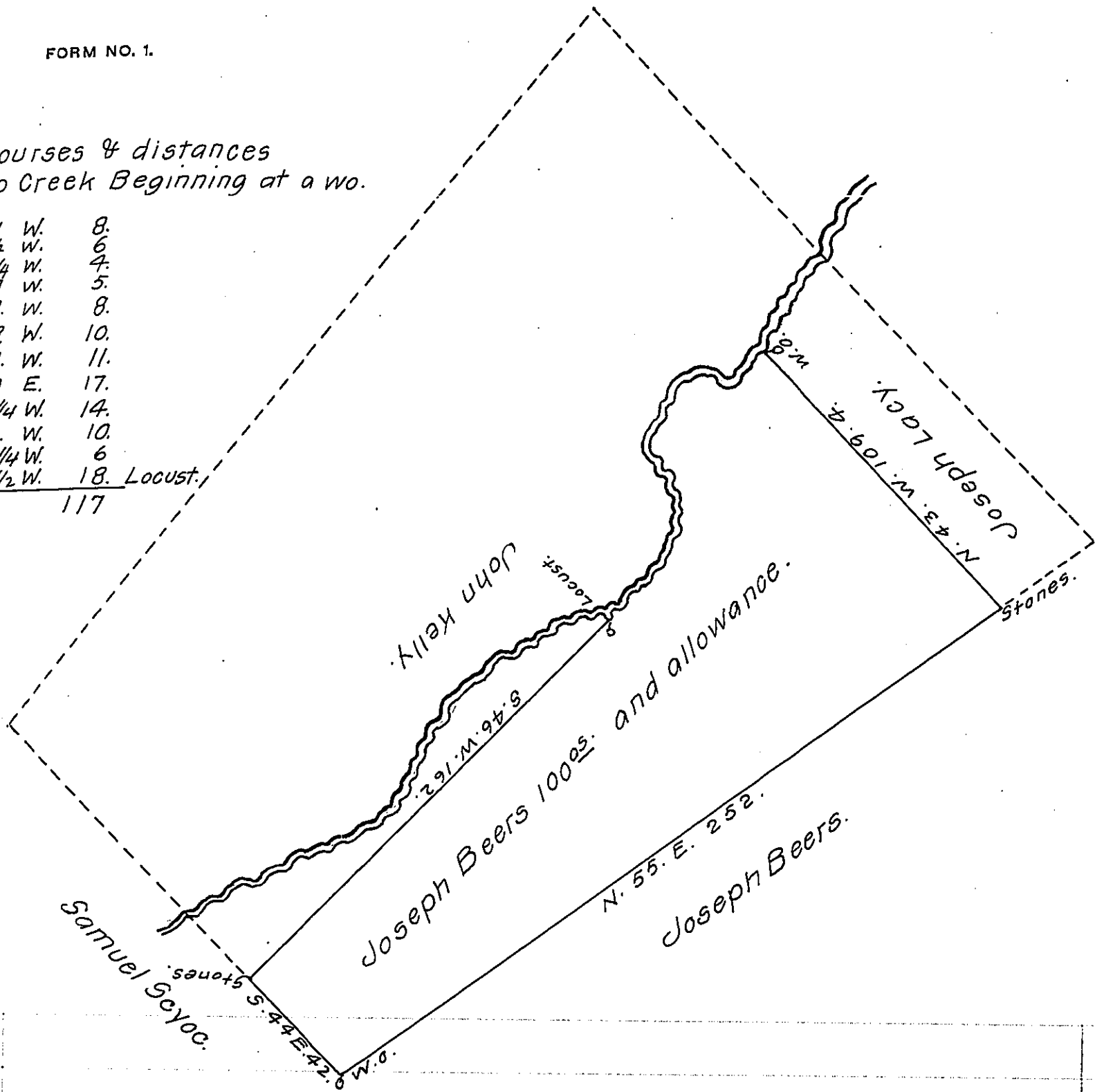


Courses & distances
up Creek Beginning at a wo.

S. 31 W.	8.
S. 42 3/4 W.	6.
S. 66 3/4 W.	4.
S. 40 W.	5.
S. 77 W.	8.
S. 28 W.	10.
S. 27 W.	11.
S. 40 E.	17.
S. 5 1/4 W.	14.
S. 21 W.	10.
S. 39 1/4 W.	6.
S. 52 1/2 W.	18. Locust.
117	



Draught of a tract of land Situate in Toboyne Township
Perry County Containing One hundred acres and Allowance of Six
per cent. for roads &c, it being part of 313^{as}. Surveyed August
28th. 1766 on a warrant granted to John Thomas dated August
10th, 1765 Surveyed the above part for Patenting September
15th. 1853 for Joseph Beers.

To J. Porter Brawley, Esq^r Per.

Surveyor General of Penna.

James Woods, C.S.

IN TESTIMONY that the above is a copy of the original remaining on file in
the Department of Internal Affairs of Pennsylvania, made
conformably to an Act of Assembly approved the 16th day of
February, 1833, I have hereunto set my Hand and caused
the Seal of said Department to be affixed at Harrisburg,
this twenty seventh day of May, 1914.

Henry Houck.
Secretary of Internal Affairs.